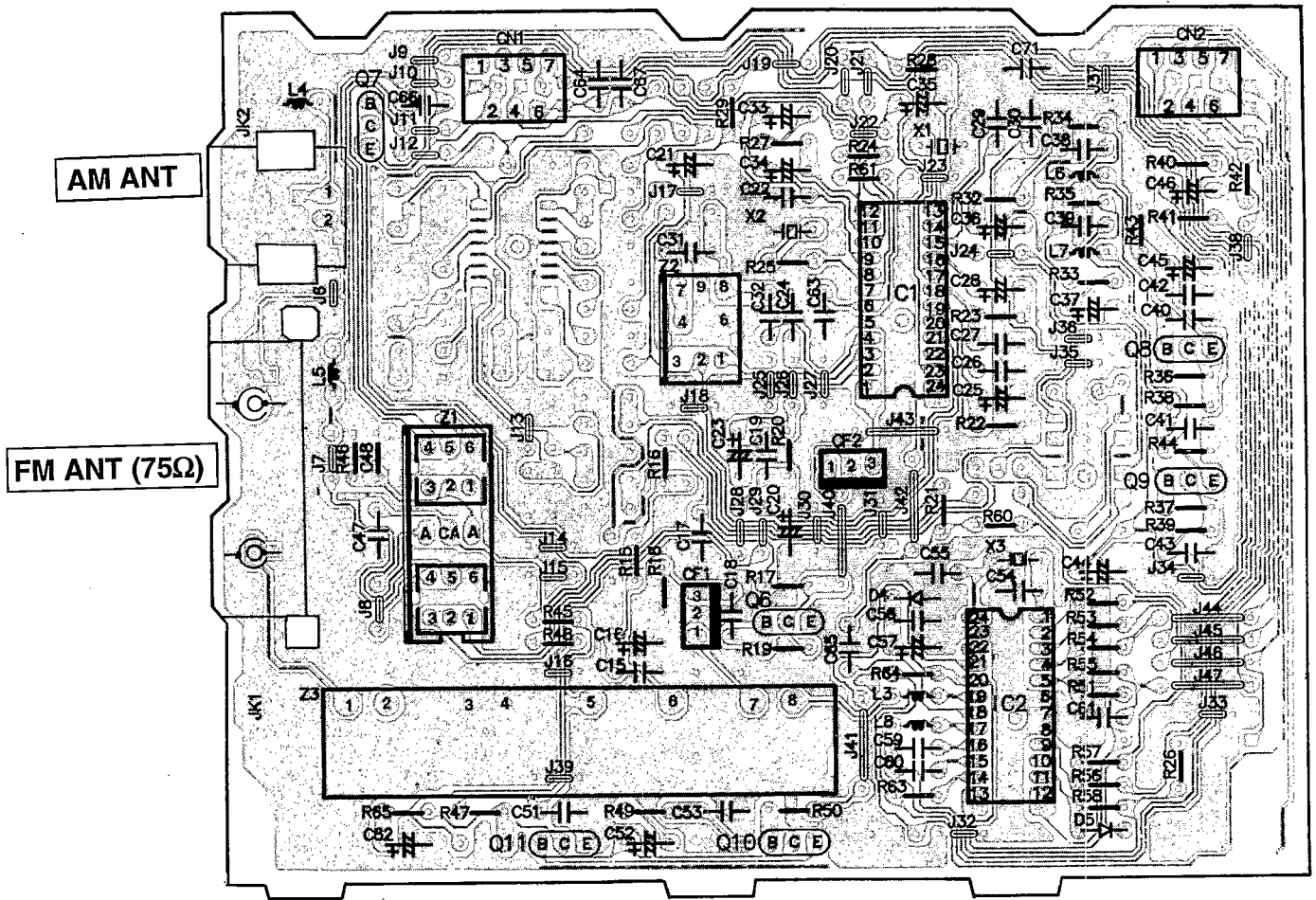
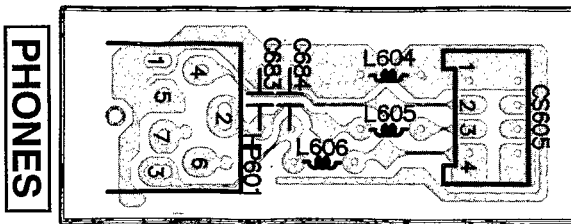




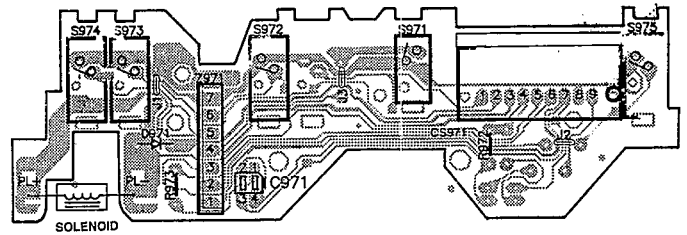
**B** Tuner P.C.B. (REP2000G)



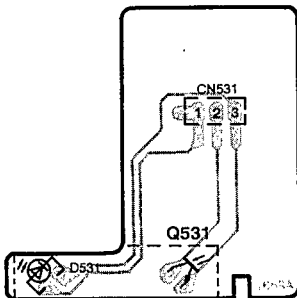
**K** Headphone P.C.B. (REP2353B)



**N** Mechanism Deck P.C.B. (REPX0108)

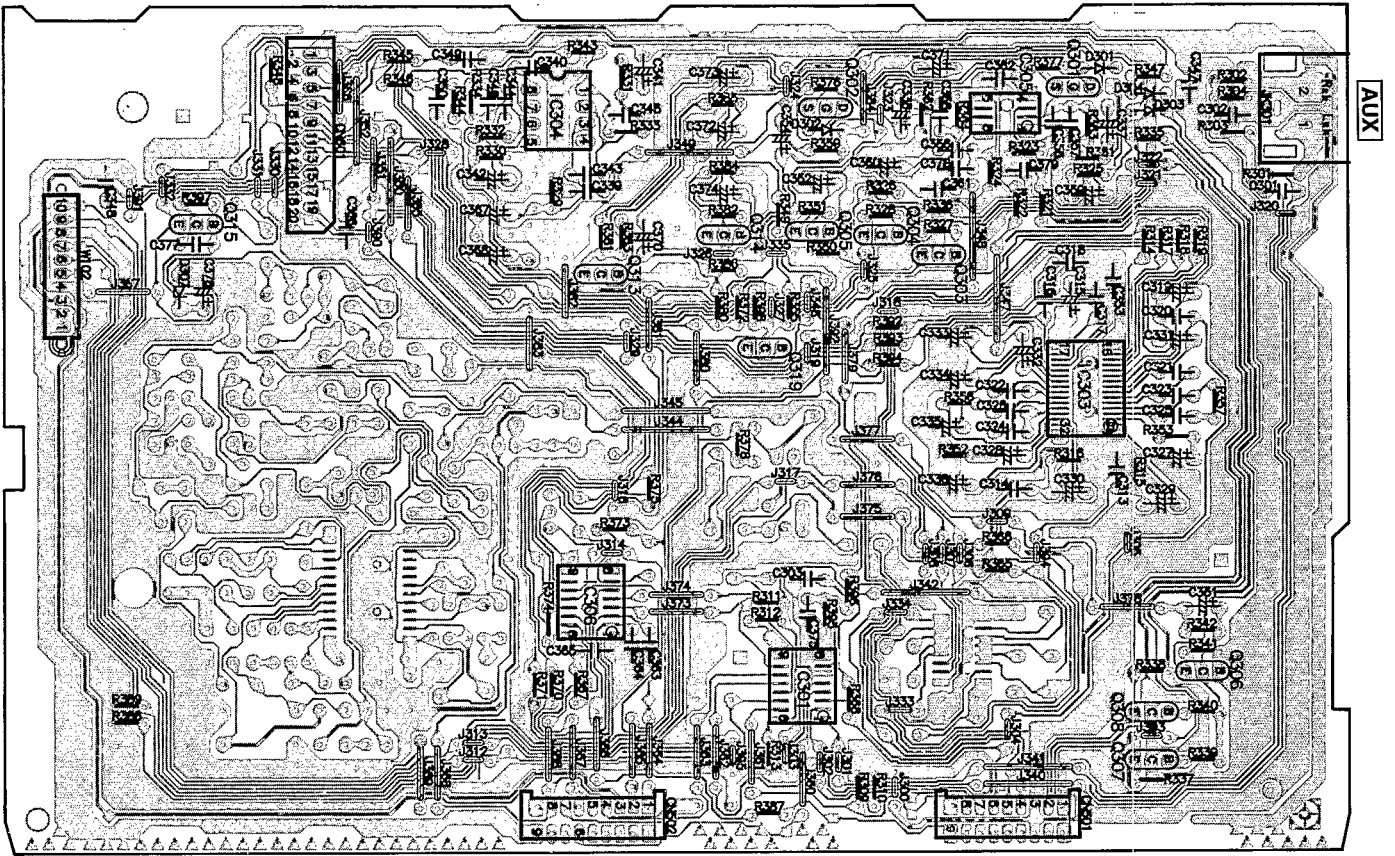


**I** Photo TR (2) P.C.B. (REP2348A-N)

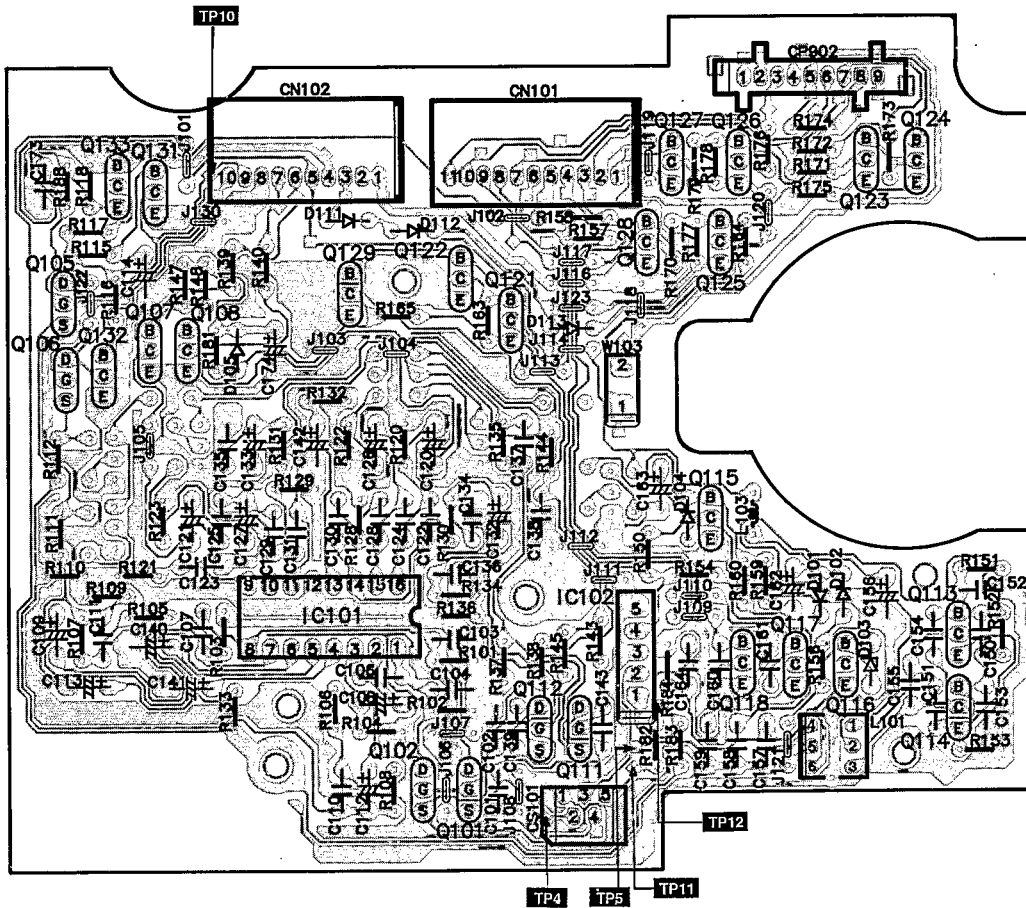




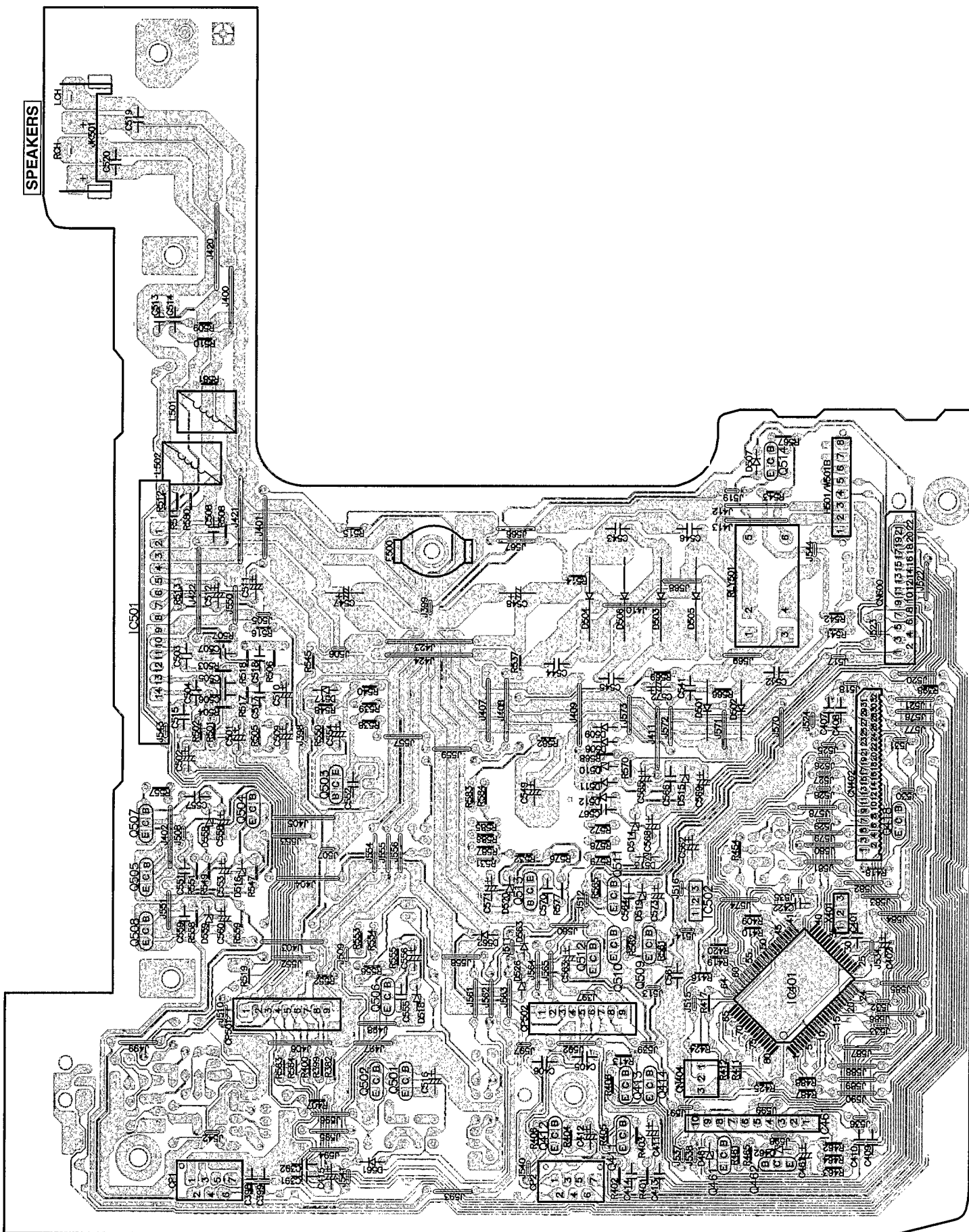
**R** Supporting P.C.B. (REP2350A)



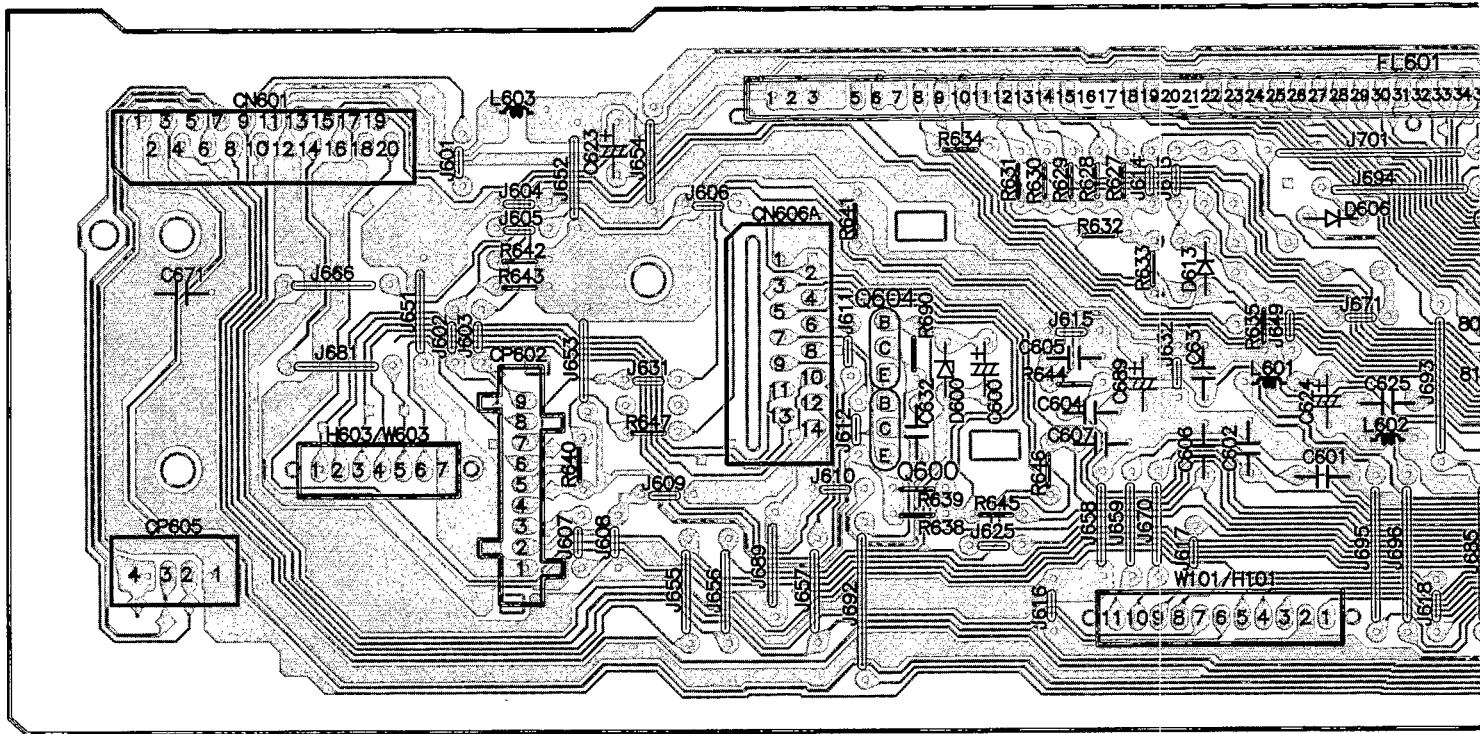
**O** Deck P.C.B. (REP2351A)



5 Main P.C.B. (REP2349B)



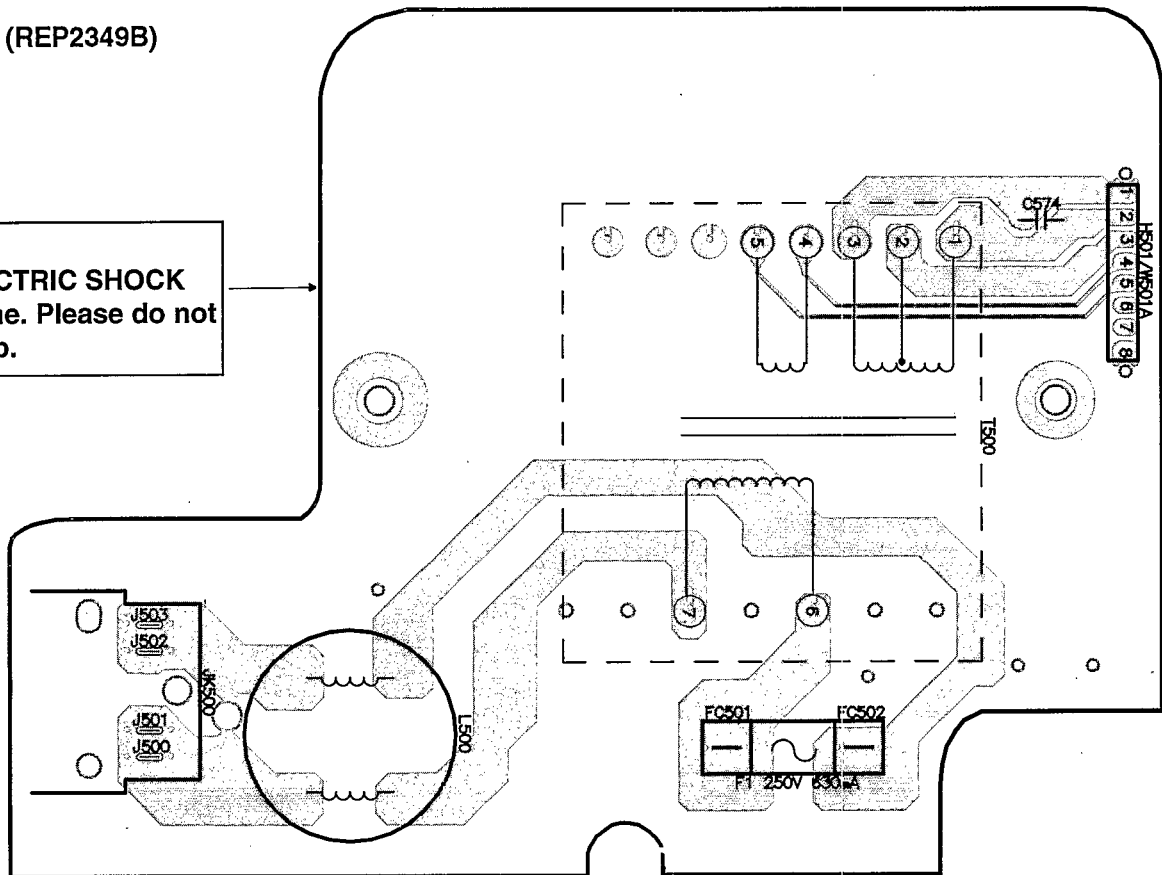
**L** Control P.C.B. (REP2353B)

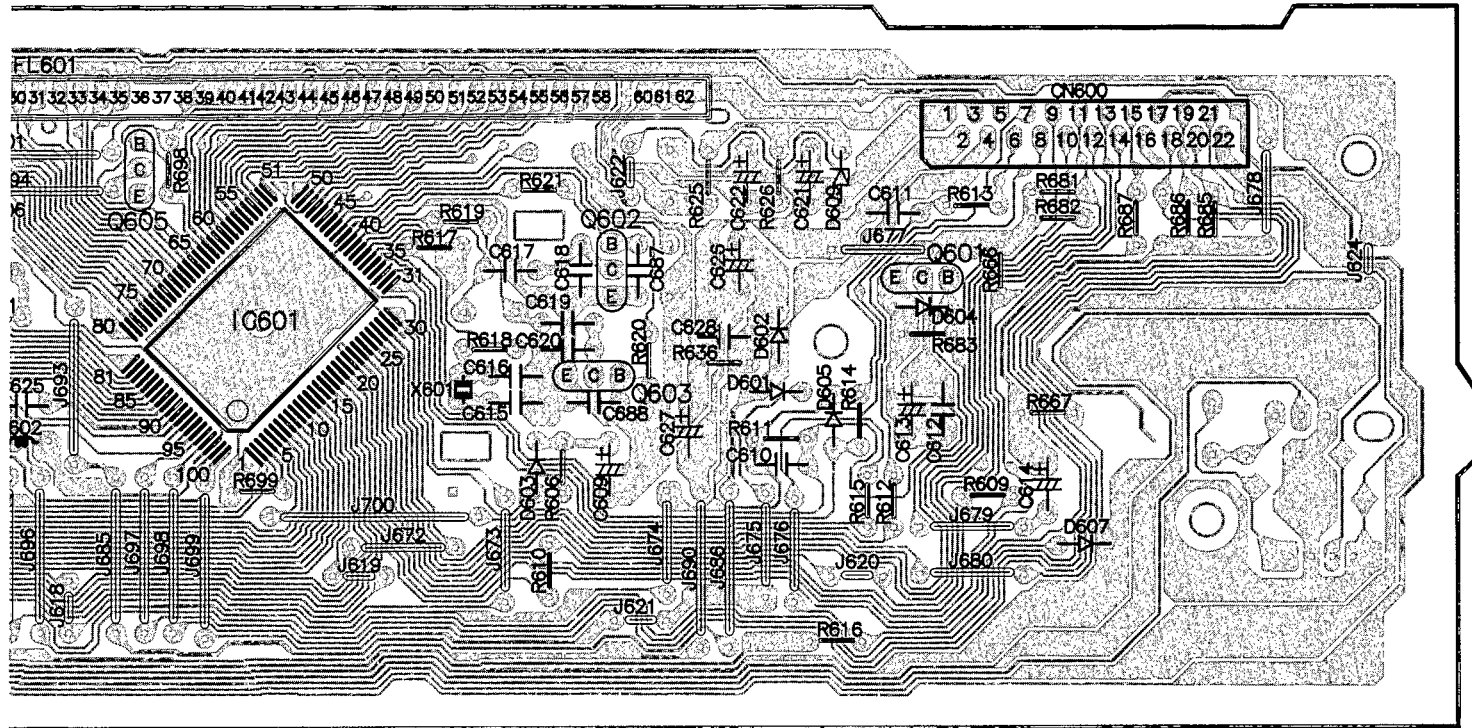


**J** Power P.C.B. (REP2349B)

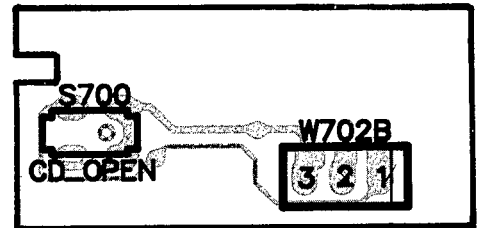
**CAUTION**  
RISK OF ELECTRIC SHOCK  
AC voltage line. Please do not  
touch this pcb.

AC IN ~  
230V...E/EG  
230V-240V...EB  
50Hz

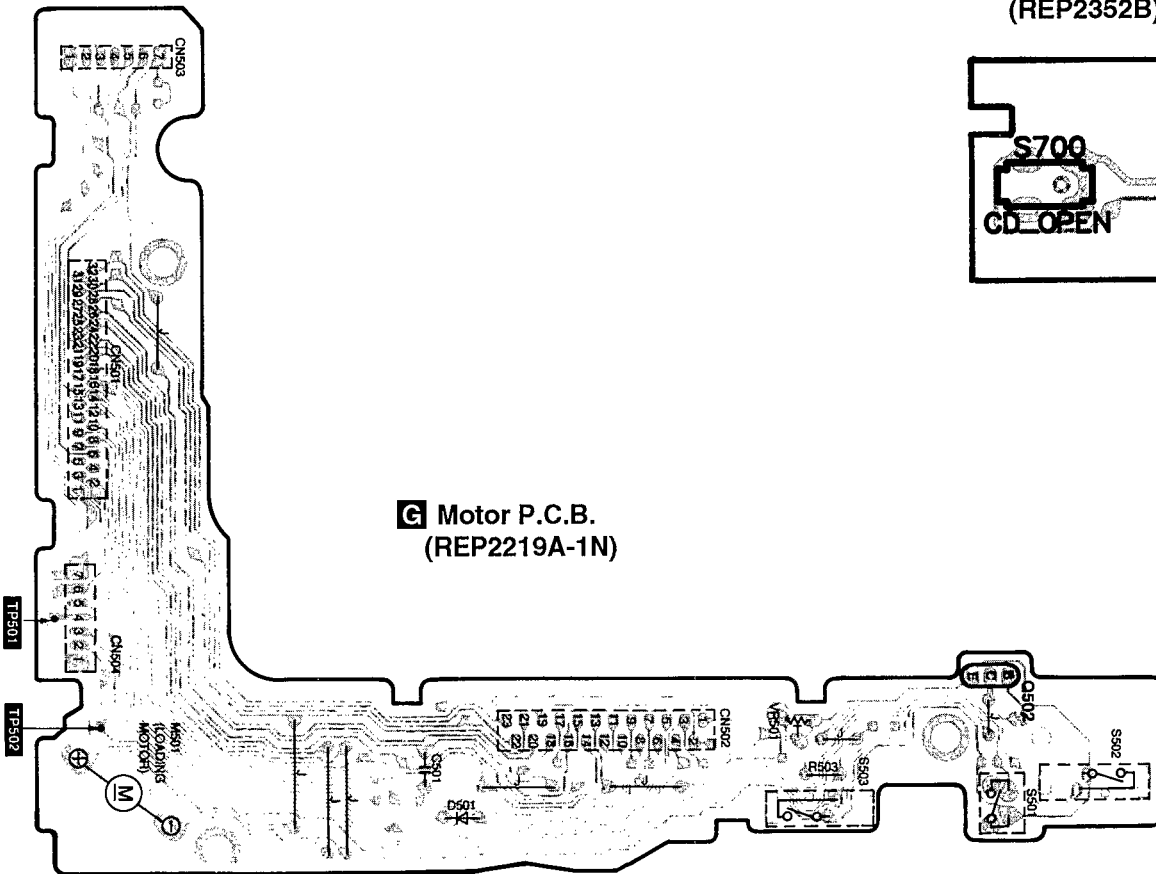




**Q** CD Switch P.C.B.  
 (REP2352B)



**G** Motor P.C.B.  
 (REP2219A-1N)



# Wiring Connection Diagram

